

Pantera[®] Pro Semi-Compliant Balloon Catheter
High push.
High cross coronary balloon.

Product Presentation

Pantera is a trademark or registered trademark of the
BIOTRONIK Group of Companies.

Pantera Pro Agenda



**Device Indication
and Therapy**



Key benefits



**Performance
Against Competitors**



**Specifications and
Ordering Info**

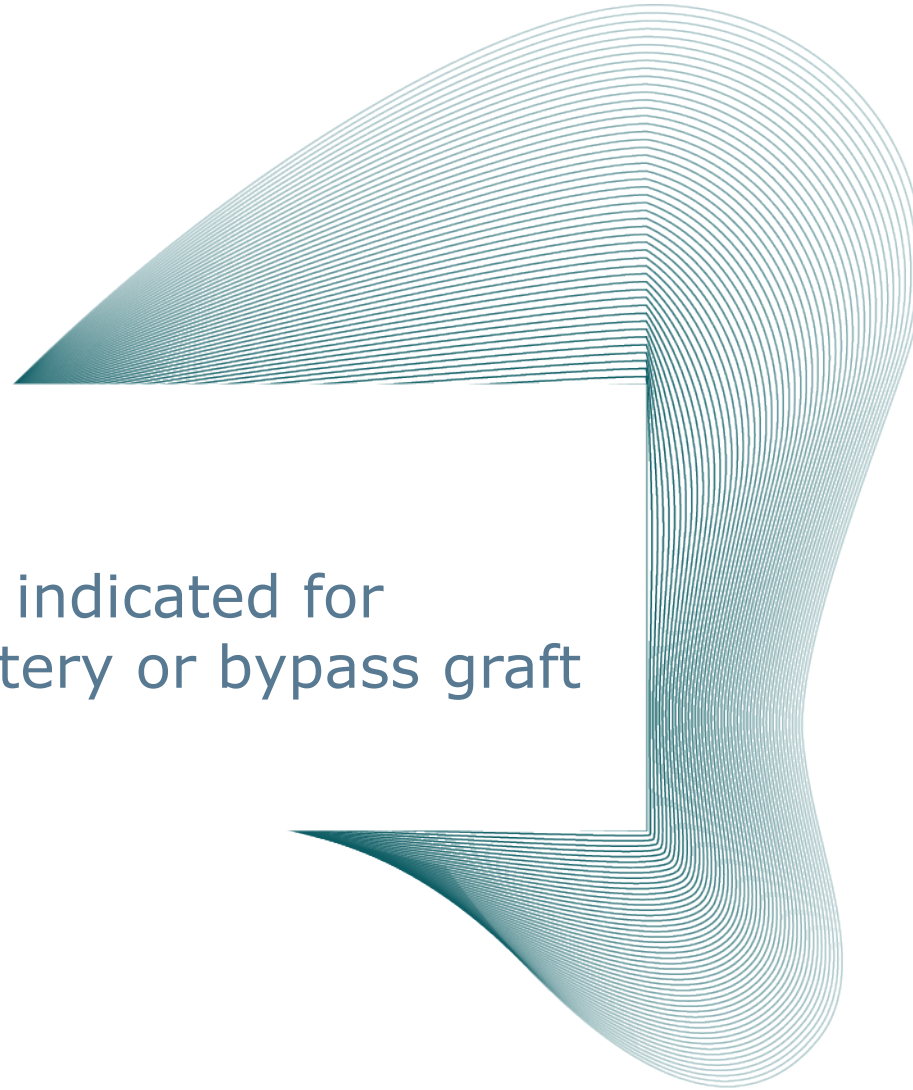


Key Takeaways

Device Indication

Pantera Pro

Semi-Compliant Balloon indicated for dilatation of coronary artery or bypass graft stenosis¹



1. Indication as per IFU.

Pantera Pro Agenda



Device Indication
and Therapy



Key Benefits



Performance
Against Competitors



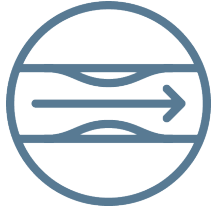
Specifications and
Ordering Info



Key Takeaways

Key Benefits

Pantera Pro



Better crossability¹



43% less friction² during simultaneous use



38% more pushability³



1. Bench test with 1.5/15mm size when compared to Mini Trek and Emerge, BIOTRONIK data on file; 2. Bench test with 3.0/20mm size when compared to Trek, BIOTRONIK data on file; 3. Bench test with 1.5/15mm size when compared to Mini Trek, BIOTRONIK data on file.

Pantera Pro Agenda



Device Indication
and Therapy



Key benefits



**Performance
Against Competitors**



Specifications and
Ordering Info

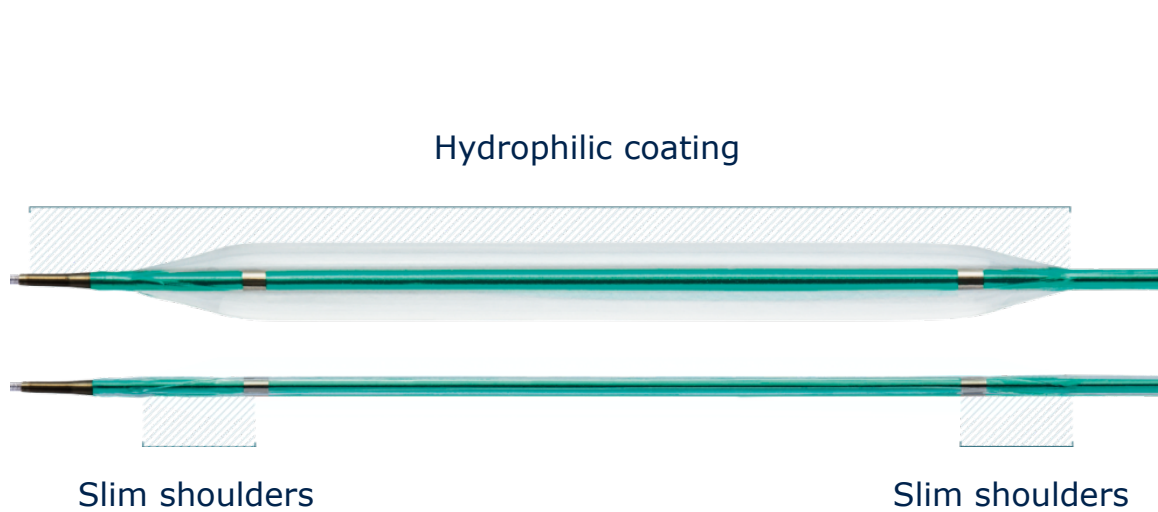


Key Takeaways

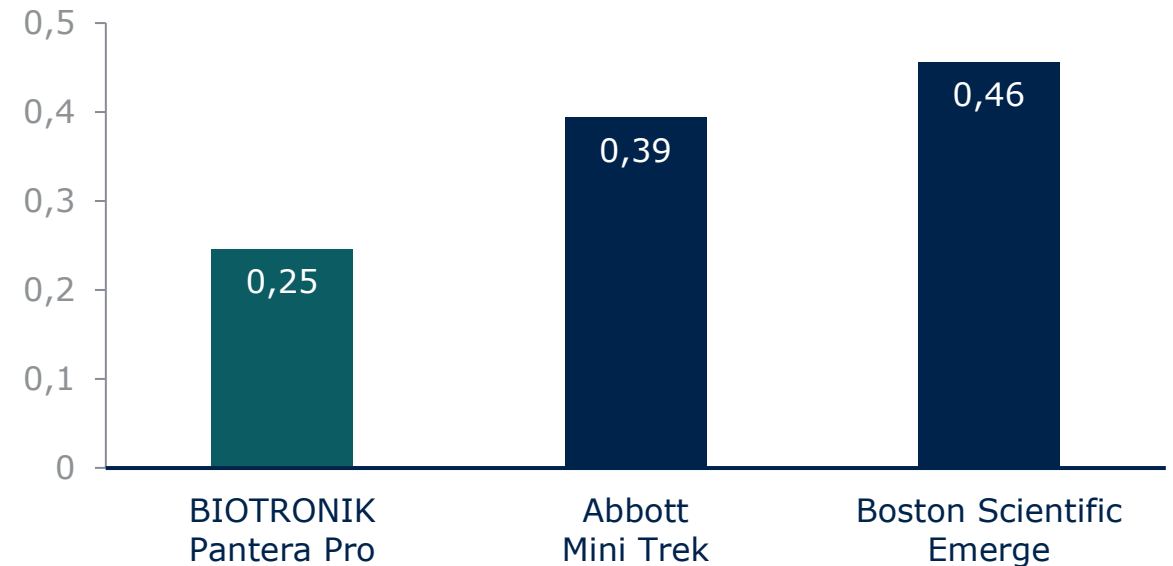
Performance Against Competitors

Better Crossability¹

The Proprietary balloon material for small sizes allows slim shoulders while maintaining durability. Slim shoulders coupled with hydrophilic coating* facilitate better crossing.¹



Max proximal force crossability 1.5/15 balloons [N]



* Ø1.25-2.0 mm

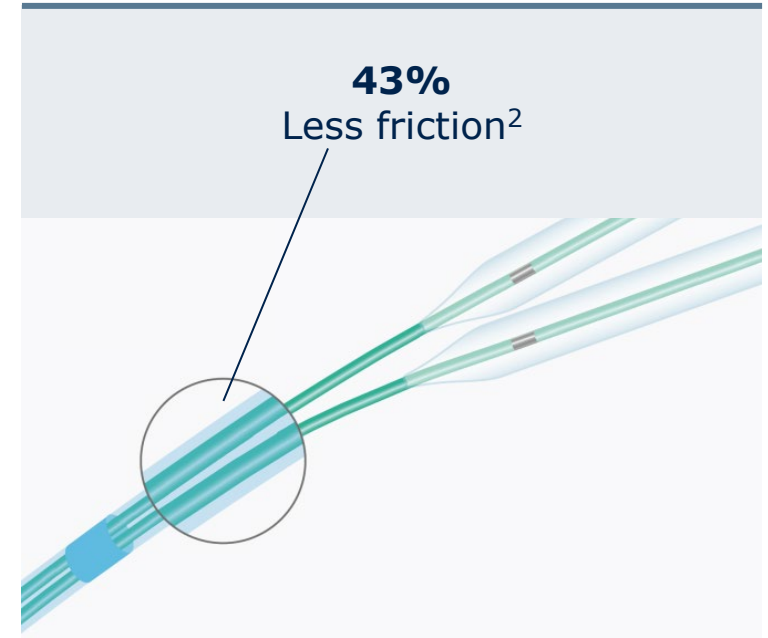
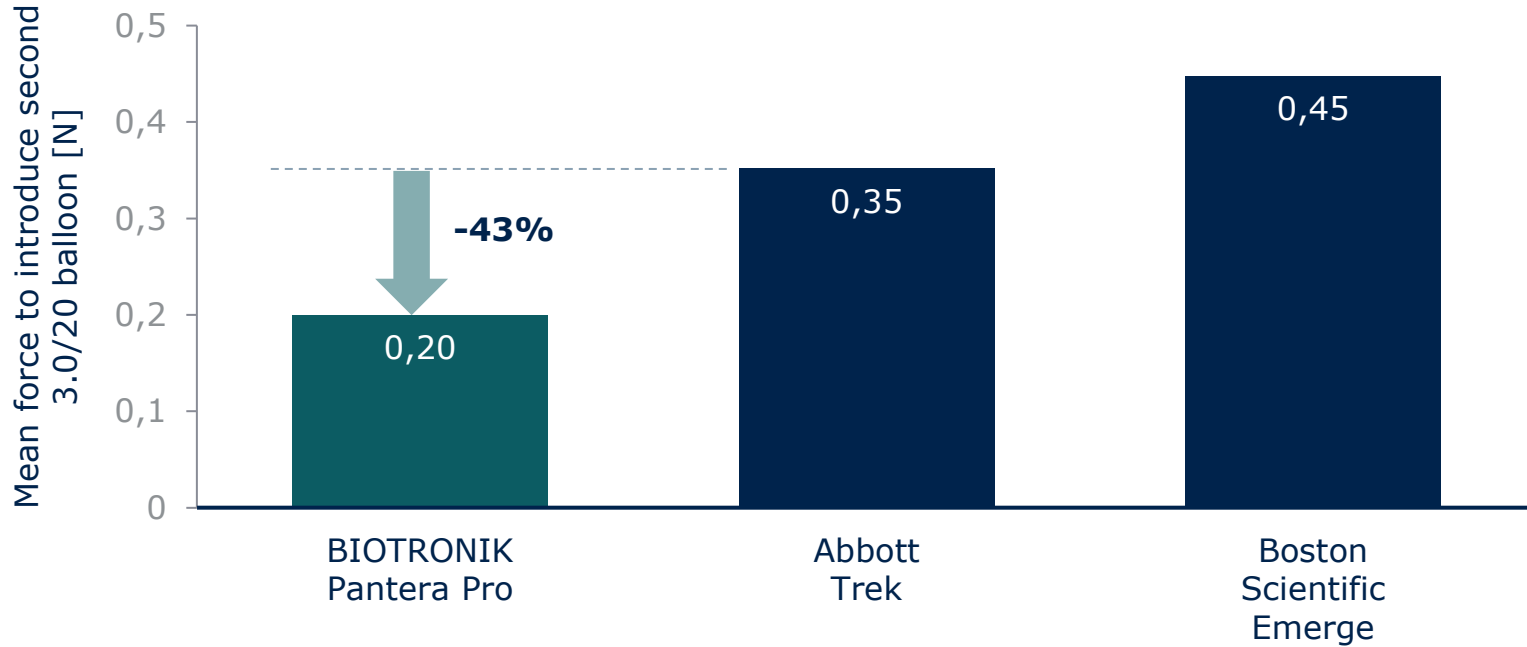
1. Bench test with 1.5/15mm size when compared to Mini Trek and Emerge, BIOTRONIK data on file. Mini Trek is a registered trademark of Abbott. Emerge is a registered trademark of Boston Scientific.

Performance Against Competitors

43% less friction¹ during simultaneous use

The reduced distal shaft profile lowers friction when using two balloons in a 6F guiding catheter.*

Lowest friction during simultaneous use of two balloons compared to main competitors¹



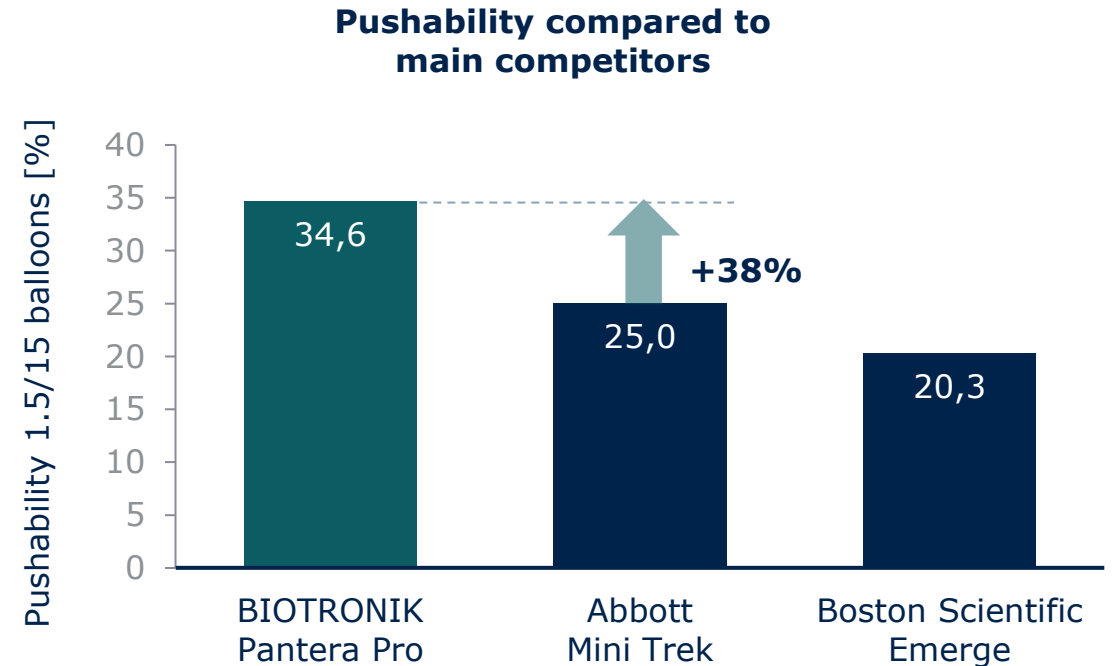
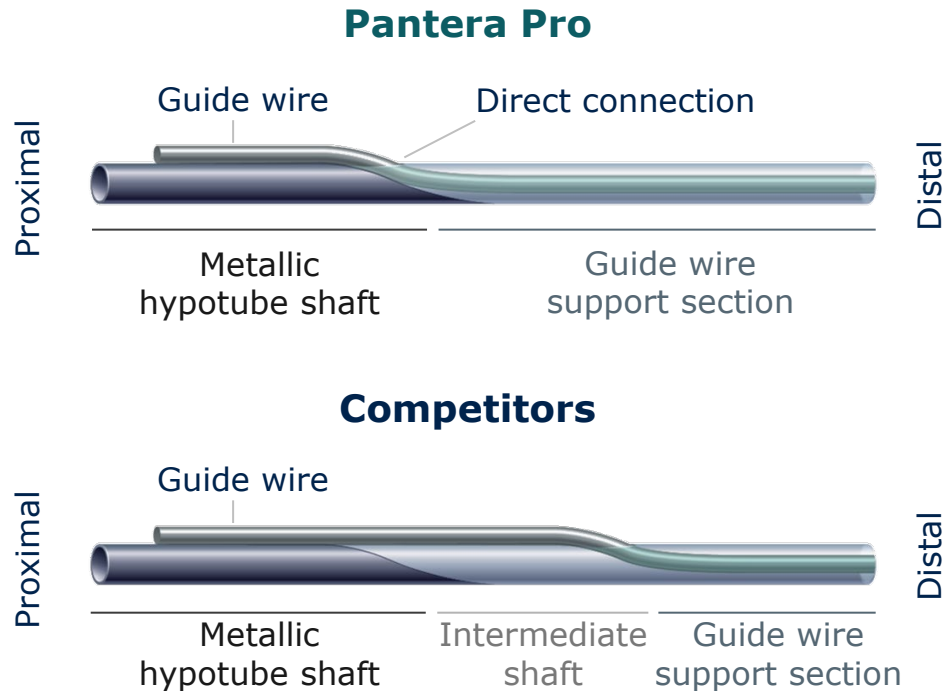
*Any combination of two diameters not larger than 3.5 mm within a 6F guiding catheter with a minimal inner diameter of 0.070"/1.78 mm.

1. Bench test with 3.0/20mm size when compared to Trek, BIOTRONIK data on file.

Performance Against Competitors

38% more pushability¹

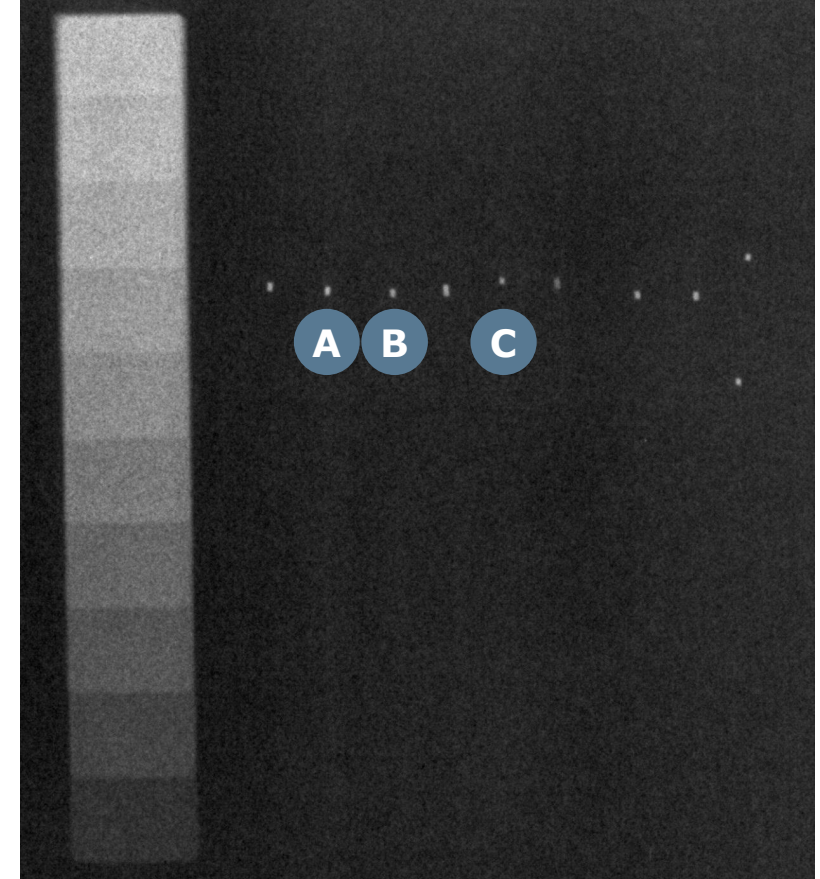
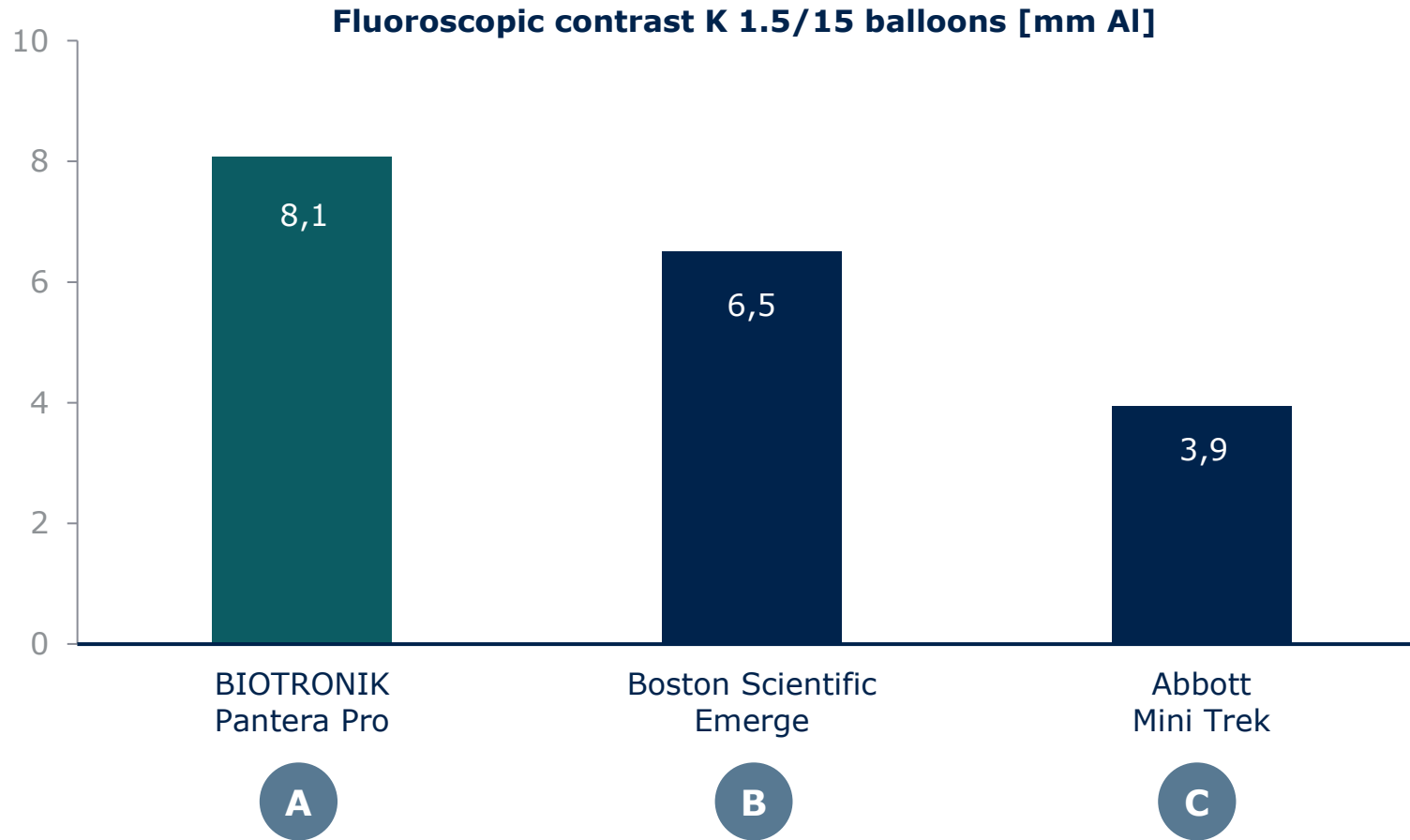
BIOTRONIK's unique Enhanced Force Transmission shaft delivers optimal pushability due to the direct transition from proximal metallic hypotube to distal guide wire support section.



1. Bench test with 1.5/15mm size when compared to Mini Trek, BIOTRONIK data on file. Mini Trek is a trademark of Abbott. Emerge is a trademark of Boston Scientific.

Performance Against Competitors

Outstanding Visibility Thanks to Highly Radiopaque Platinum-Iridium Markers



Source: BIOTRONIK data on file.
Mini Trek is a registered trademark of Abbott. Emerge is a registered trademark of Boston Scientific.

Pantera Pro



Available in diameters 1.25 mm to 4.0 mm

Hydrophilic balloon coating for diameters 1.25-2.0 mm

Low crossing profile, 5F guide catheter compatible

Reduced distal shaft diameter for improved 6F simultaneous use compatibility

Enhanced Force Transmission (EFT) shaft for unmatched pushability

Pantera Pro Agenda



Device Indication
and Therapy



Key benefits



Performance
Against Competitors



**Specifications and
Ordering Info**



Key Takeaways

Pantera Pro

Specifications

Recommended guide catheter	5F (min. I.D. 0.056" / 1.42 mm)
Guide wire diameter	0.014"
Usable catheter length	140 cm
Catheter type	Fast exchange
Shaft markers	92 cm & 102 cm from tip (brachial / femoral approach)
Simultaneous use compatibility	6F guiding catheter (min. I.D. 0.070" / 1.78 mm), up to ø3.5 mm
Balloon material	Semi Crystalline Co-Polymer
Nominal pressure	7 atm
Rated burst pressure	14 atm
Balloon folding	ø 1.25 - 1.5 mm : Two-fold ø 2.0 - 4.0 mm : Tri-fold
Balloon & tip coating	ø 1.25 - 2.0 mm : Hydrophilic ø 2.5 - 4.0 mm : Hydrophobic
Lesion entry profile	0.017"
Proximal shaft	Hypotube design, hydrophobic coating, 2.0F diameter
Distal shaft diameter	2.6F (ø 1.25 – 2.0 mm), 2.7F (ø 2.5 - 3.5 mm), 2.9F (ø 4.0 mm)
Distal shaft coating	Hydrophilic (excluding balloon)

Pantera Pro

Ordering Information

Diameter (mm)	Length (mm)					
	6	10	15	20	25	30
1.25	393289	393291	393298	393305		
1.5	393290	393292	393299	393306		
2.0		393293	393300	393307	393312	393317
2.5		393294	393301	393308	393313	393318
3.0		393295	393302	393309	393314	393319
3.5		393296	393303	393310	393315	393320
4.0		393297	393304	393311	393316	393321

Pantera Pro Agenda



Device Indication
and Therapy



Key benefits



Performance
Against Competitors



Specifications and
Ordering Info



Key Takeaways

Pantera Pro

Key Takeaways



Better crossability¹



43% less friction² during simultaneous use



38% more pushability³

1. Bench test with 1.5/15mm size when compared to Mini Trek and Emerge, BIOTRONIK data on file; 2. Bench test with 3.0/20mm size when compared to Trek, BIOTRONIK data on file; 3. Bench test with 1.5/15mm size when compared to Mini Trek, BIOTRONIK data on file.